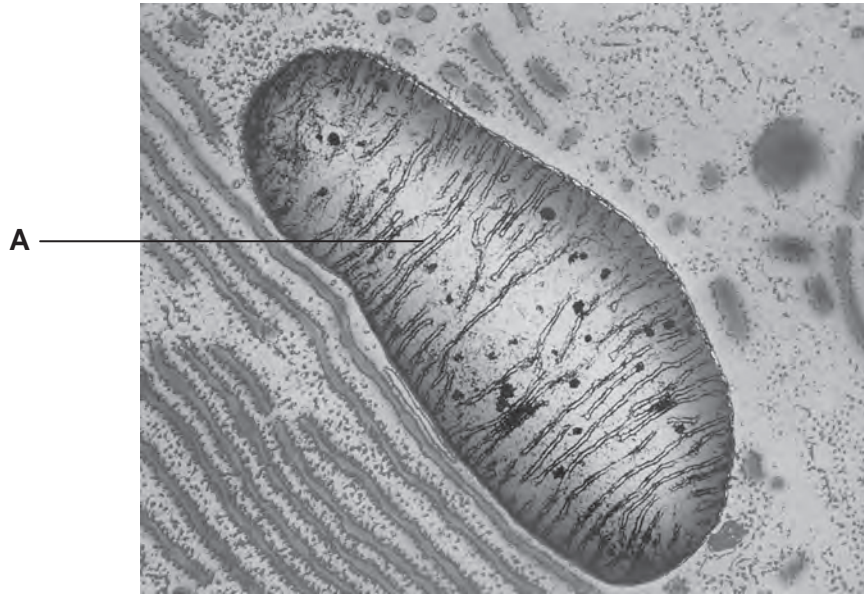




(b) Fig. 1.2 is an electron micrograph of a mitochondrion from an animal cell.



**Fig. 1.2**

(i) Name the structure labelled **A**.

..... [1]

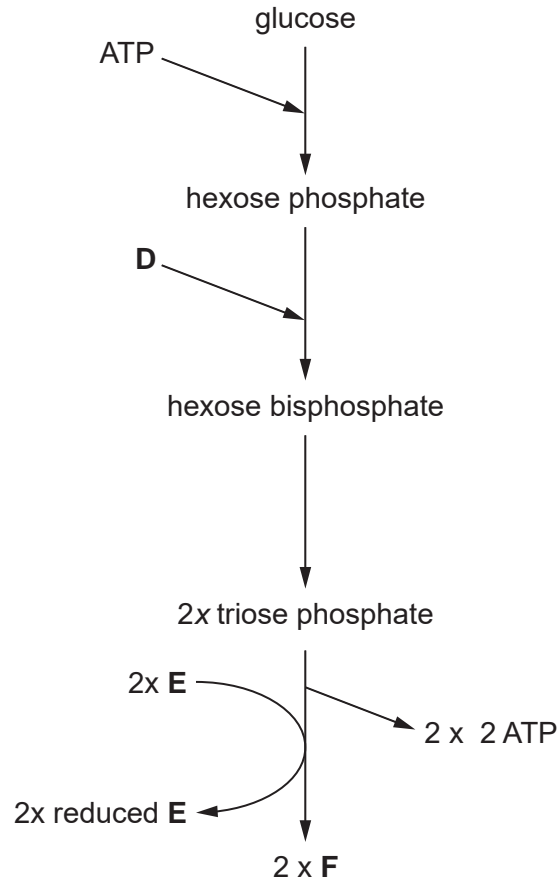
(ii) Name the specific process that is carried out by structure **A** in the mitochondrion.

..... [1]





2 (a) Fig. 2.1 represents the first stage of respiration.



**Fig. 2.1**

(i) Name the stage represented by Fig. 2.1.

..... [1]

(ii) State precisely where in the cell this stage takes place.

..... [1]

(iii) Identify the compounds **D**, **E** and **F**.

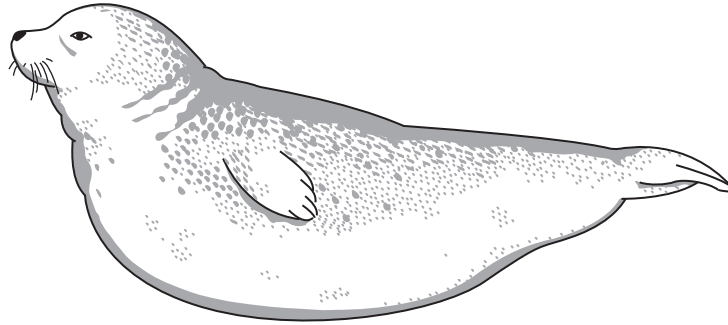
**D** .....

**E** .....

**F** ..... [3]



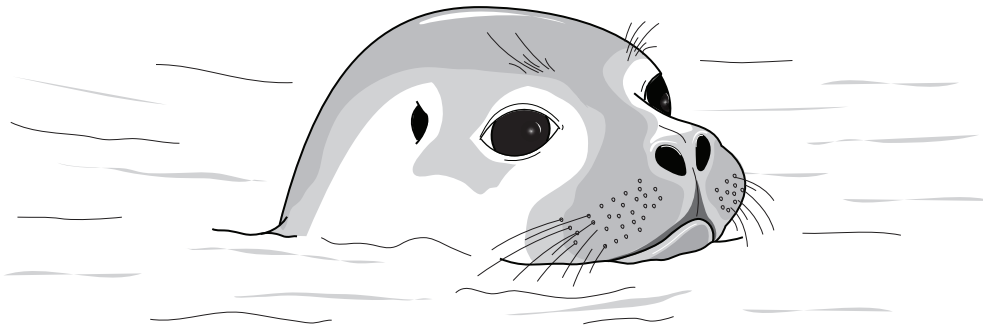
(c) Fig. 2.2 is a drawing of a common seal, *Phoca vitulina*, an aquatic mammal.



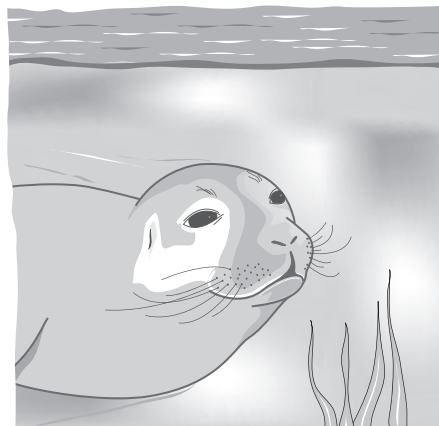
**Fig. 2.2**

The seal comes to the surface of the water to obtain air and it can then stay underwater for over 20 minutes.

Fig. 2.3 shows a seal at the surface of the water and Fig. 2.4 shows the same animal then submerging again.



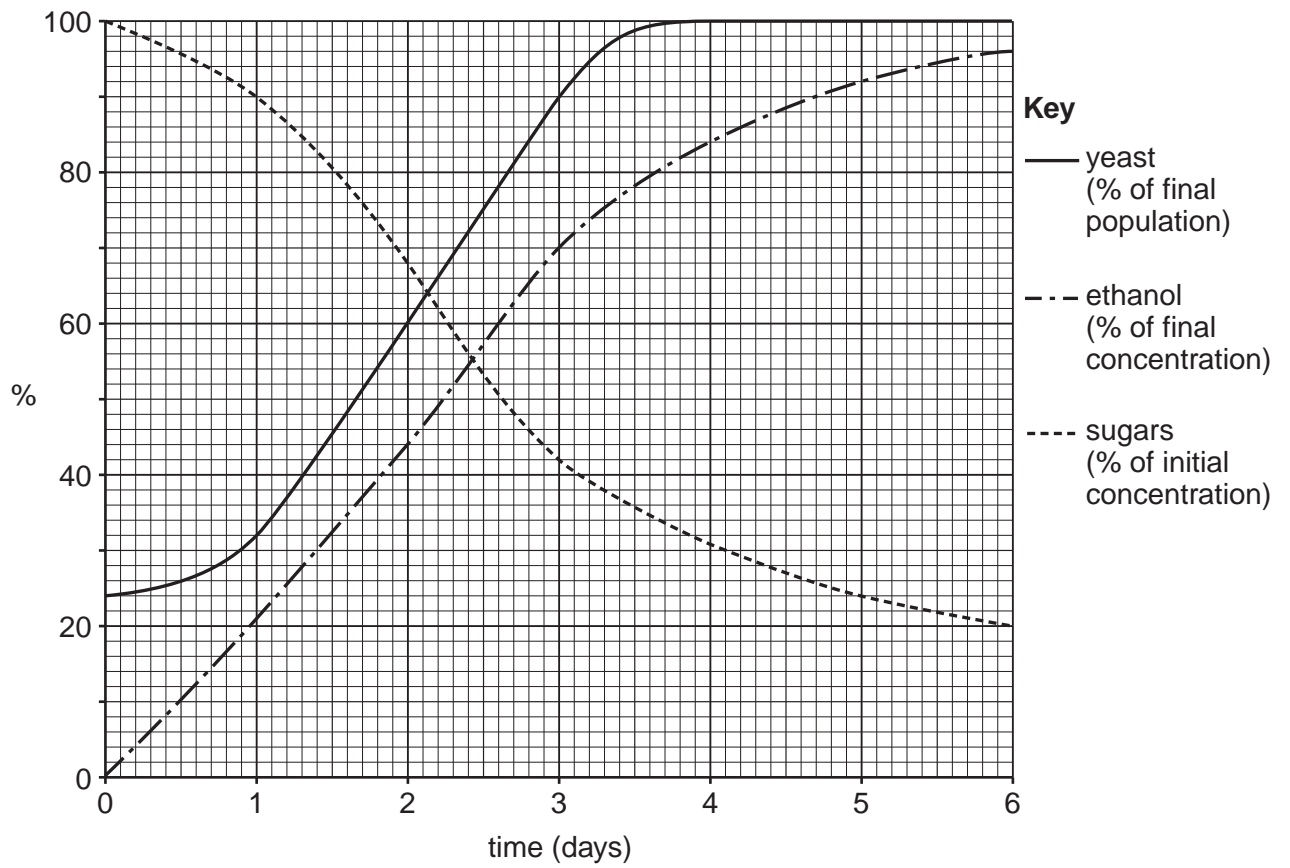
**Fig. 2.3**



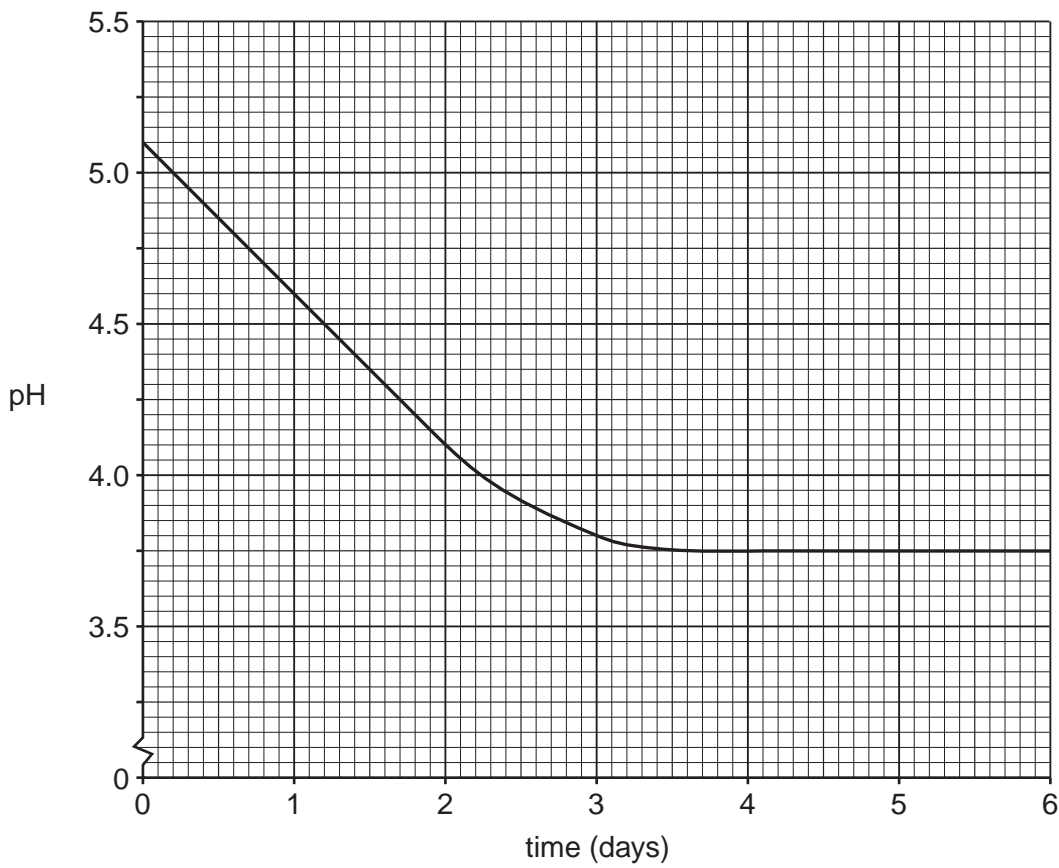
**Fig. 2.4**







**Fig. 5.1(a)**





(iii) Using the information from Fig. 5.1(a), explain why ethanol is considered to be a primary metabolite of yeast.

.....  
.....  
..... [1]

(iv) Using only the information from Fig. 5.1(a) and Fig. 5.1(b), outline how **two** factors may limit the maximum size of the yeast population.

1 .....

.....

.....

2 .....

.....

..... [2]





4 Fatigue is a symptom of some medical conditions. One feature of fatigue is extreme tiredness, due to a lack of energy.

Medical conditions that have fatigue as a characteristic symptom include Type 2 diabetes, certain heart conditions, chronic fatigue syndrome (CFS) and emphysema.

(a) Explain how emphysema could result in fatigue.

.....  
.....  
.....  
.....  
.....  
..... [2]

(b) In Type 2 diabetes, the target cells do not respond correctly to the insulin produced when there is an increase in blood glucose concentration.

Suggest why fatigue may occur in a person with Type 2 diabetes who is **not** taking medication.

.....  
.....  
.....  
.....  
.....  
..... [2]

(c) Certain heart conditions result in a weak and irregular heart beat.

Suggest how a weak and irregular heart beat could result in fatigue.

.....  
.....  
.....  
.....  
..... [2]

